

Comprehensive Biomarker Testing Service



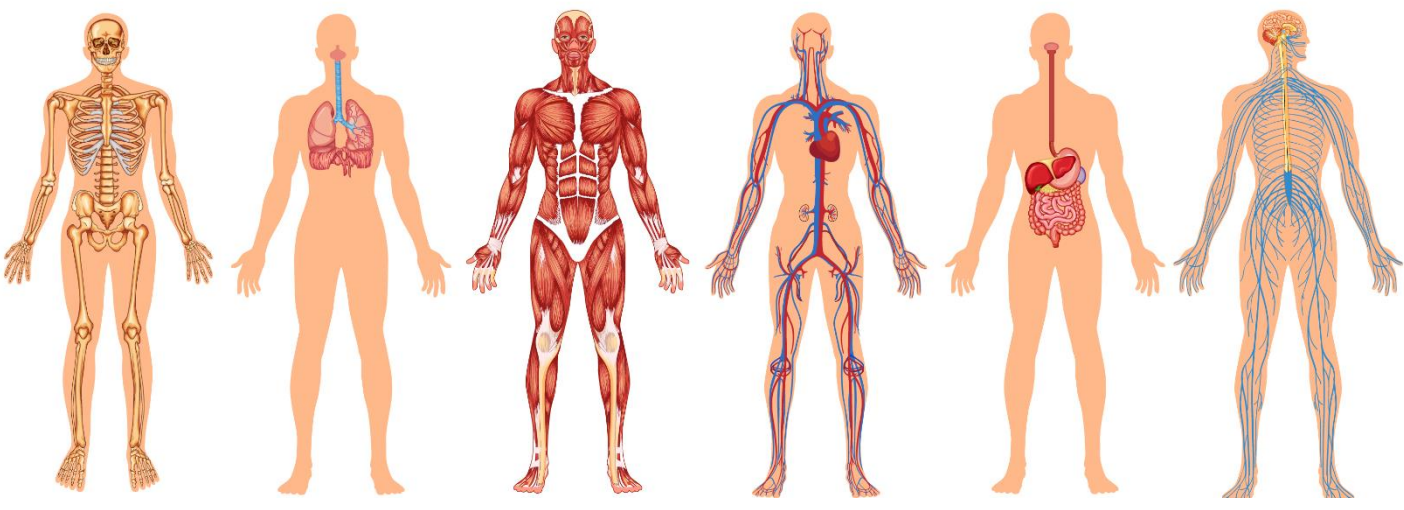
Comprehensive Health & Wellness Management Program protein biomarker testing service from PanoHealth, LLC.

PanoHealth uses the world's largest panel of 1,000 protein biomarkers for the measurement and comprehensive analysis of changes over time.



- ❖ Summarize your health across 15 body systems
- ❖ Elucidate your personal baseline
- ❖ Compare to population normal ranges

- Skeletal System
- Muscular System
- Cardiovascular System
- Nervous System
- Respiratory System
- Wound Healing
- Gastrointestinal System



- Angiogenesis/Tissue Remodeling
- Liver Health
- Immune System
- Cell Growth
- Oxidative Stress
- Metabolism
- Urinary System
- Reproductive System



www.panohealth.com
Tel: 678-387-3712
Customer Service: info@panohealth.com

