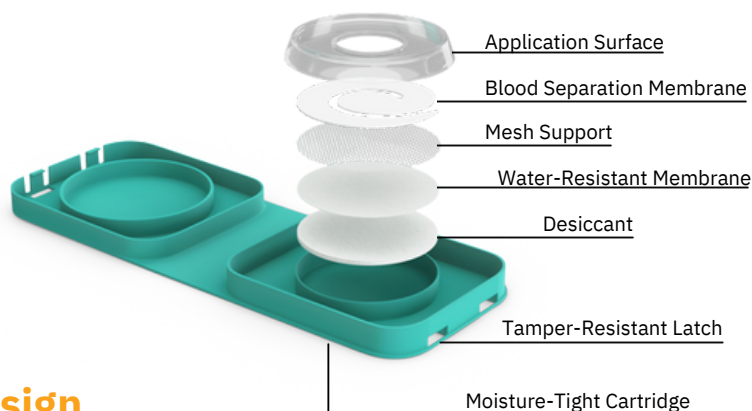




The unique, patented device that separates whole blood into red blood cells, cellular material, and serum, while protecting the sample from external conditions.

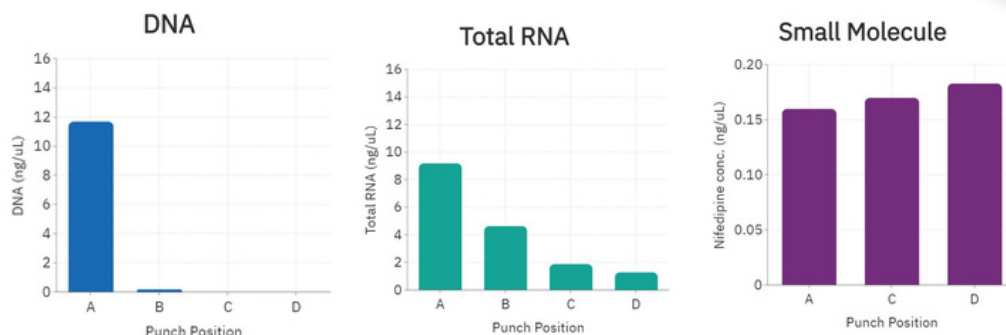
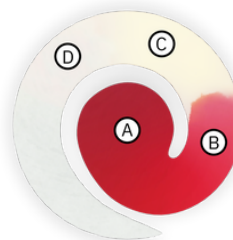


Advanced Paper Design

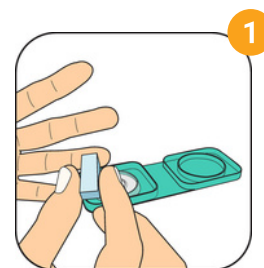
HemaSpot SE features SeraForm™ absorbent paper which separates serum from whole blood by impeding the movement of larger particles while allowing serum soluble components to flow freely through the matrix.

Sample Analysis

Samples punched (positions A, B, C, D) from blood separated and dried on HemaSpot SE show high DNA levels only at position A. RNA is found in both cell (A, B) and non-cell (C, D) positions. The small molecule, Nifedipine, shows similar levels for all positions.



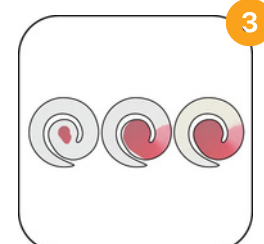
For Research Use Only. Not For Use in Diagnostic Procedures.



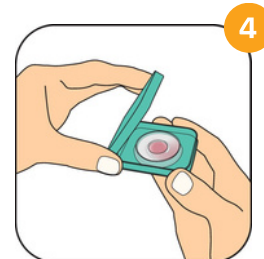
Stick finger with lancet.



Add 3 drops of blood.



Wait 2 minutes.



Close lid and ship.



HASSLE FREE

Serum separation in the field - no additional equipment needed.



EASILY TRANSFERRABLE

Perform assays that utilize liquid serum.



REHYDRATE & GO

Eliminates sample prep steps typically required in DBS.



HIGHLY VERSATILE

Serum separation allows for wider variety of testing from one sample.